



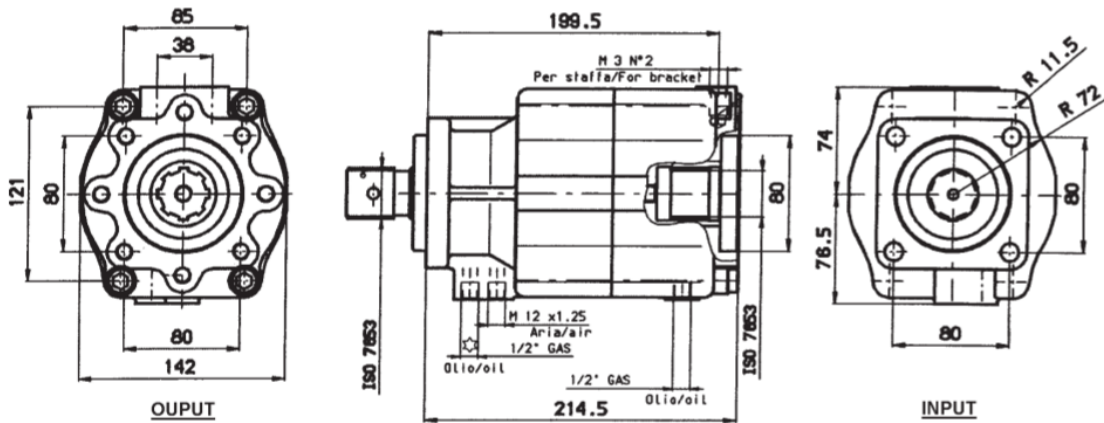
**AIR CLUTCH 3510680000**

- ✓ Direct mount to all ISO 4 Bolt PTO's
- ✓ In built oil pump
- ✓ Compact design
- ✓ "Plug In" to ISO STD engine PTO's
- ✓ Oil cooled\*

Max. Torque (Kgm):	40
Max. engagement RPM:	1000RPM
Max. engaged RPM	3200RPM
Max. full load RPM	2500RPM
Internal Ratio:	1:1
Oil Grade:	SAE 20 Minimum SAE 40 Maximum
Suggested Oil:	Castrol TFC410 or Equiv.
Recommended Tank Size:	15 Litres
Weight (kg):	22

**Note:** Where the clutch is connected to a main hydraulic reservoir for cooling, standard hydraulic mineral oil or ATF is acceptable.

**DIMENSIONS**



\*Tank and hose kit in not included

P:\Master 2008\J Air Clutch & SSU's\ja3 351068 Air Clutch, Rev 3, 171209.pmd

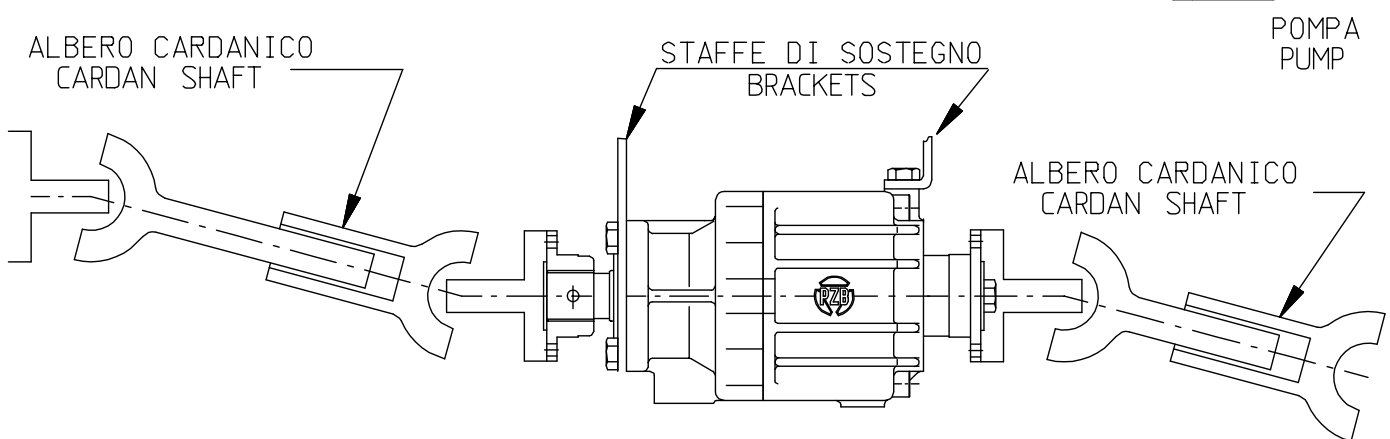
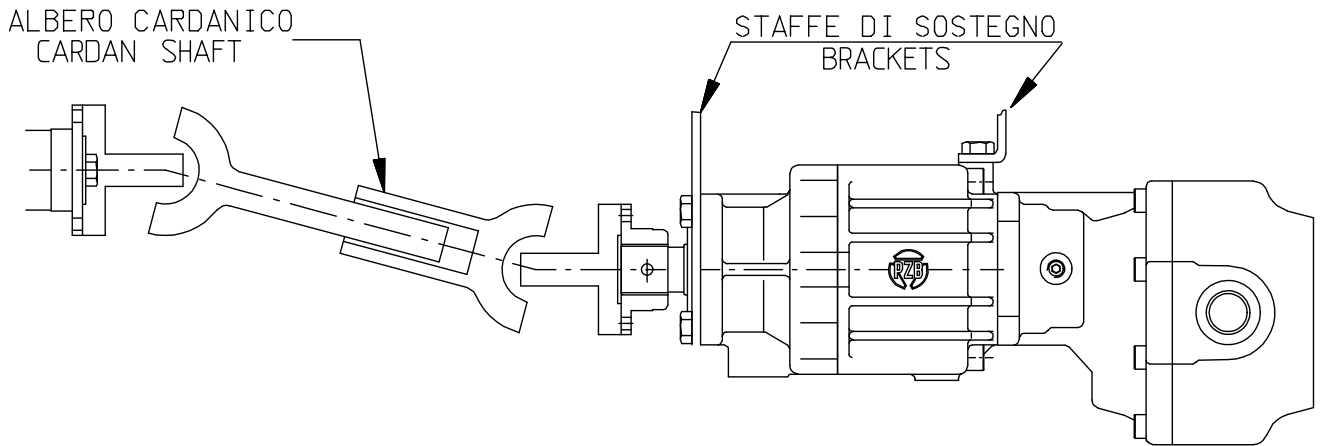
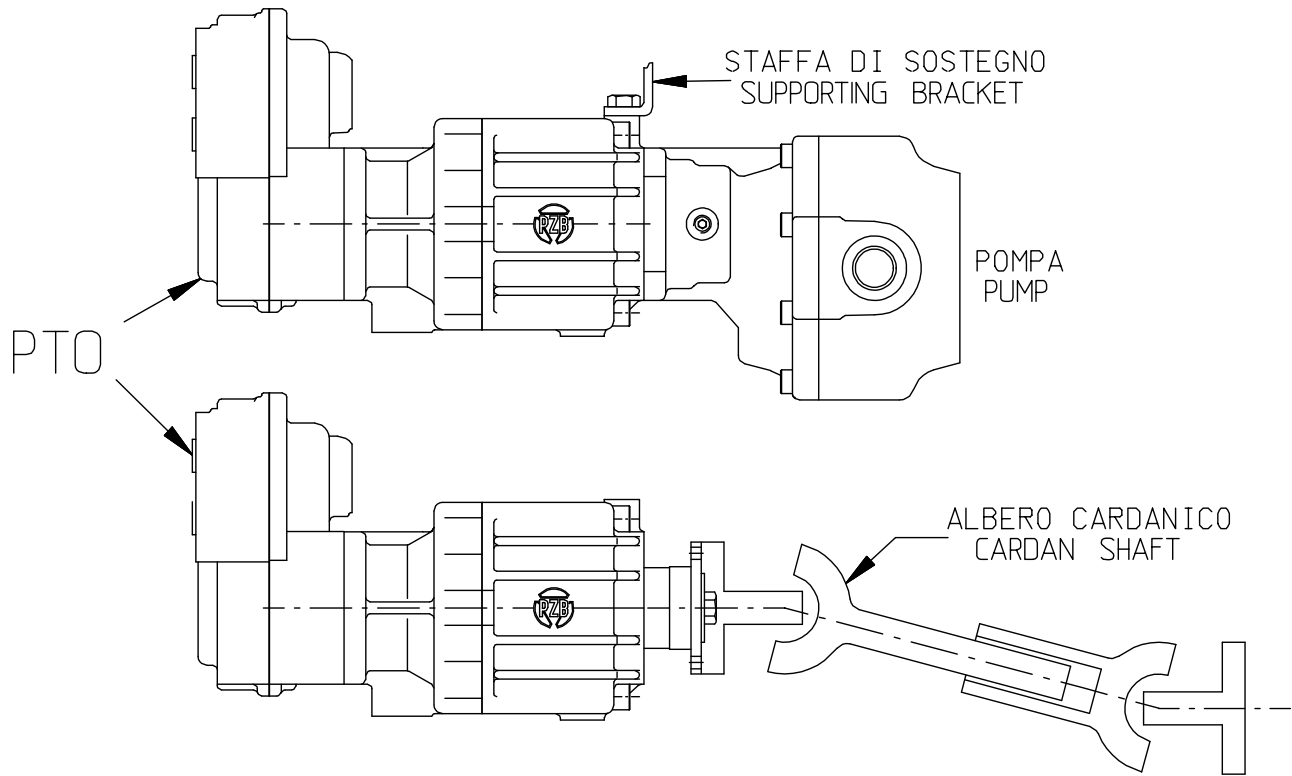


**OUTPUT OPTIONS**

ISO 4 BOLT PUMP MOUNT - 205X0870000



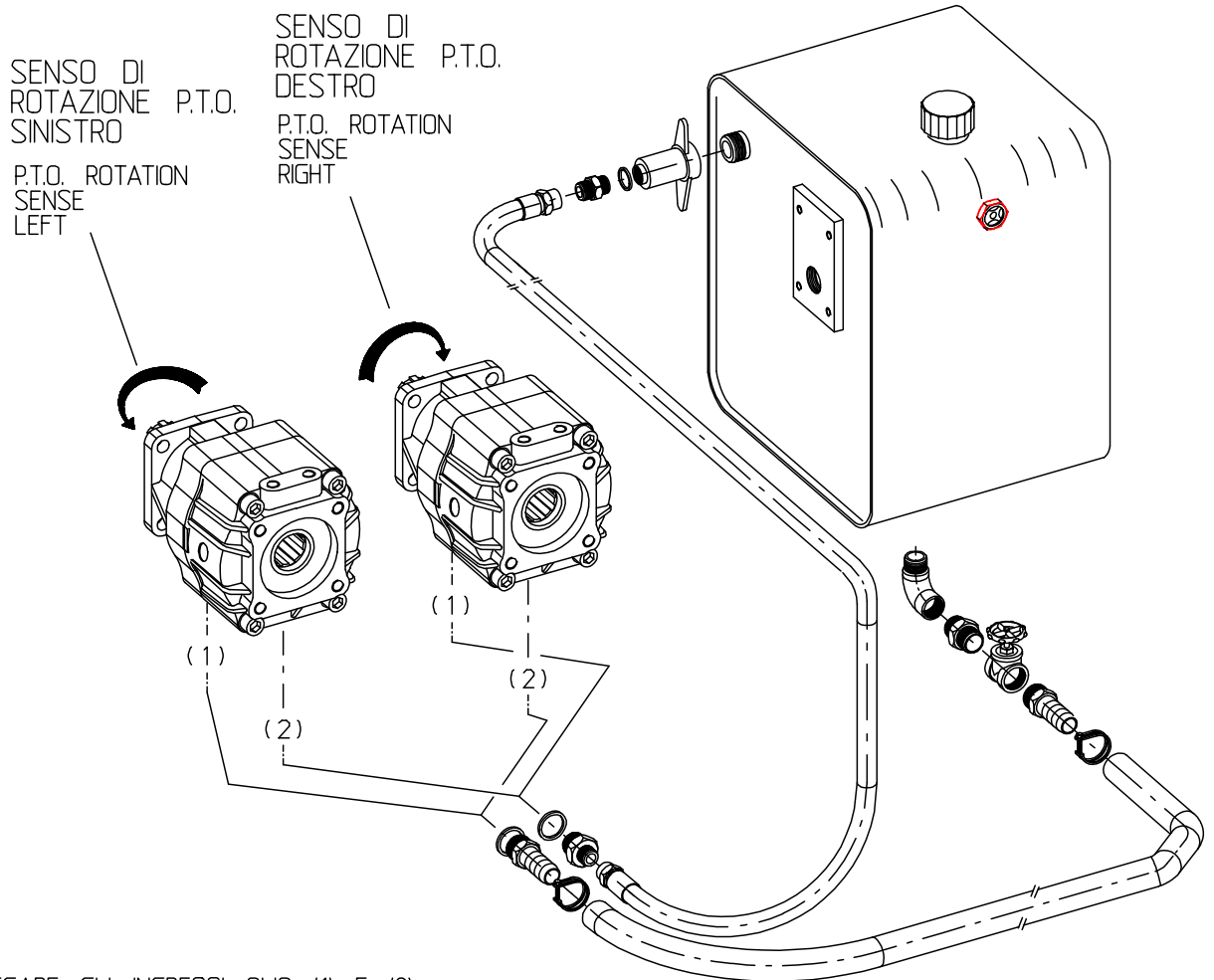
# ESEMPI DI INSTALLAZIONE / INSTALLATION OPTIONS



ASSICURARSI CHE LA PRESSIONE MINIMA DI UTILIZZO DEFINITA, SIA "GARANTITA" DURANTE TUTTO L'ARCO DI FUNZIONAMENTO.

CHECK THAT THE MINIMUM WORKING PRESSURE IS ALWAYS ASSURED DURING FUNCTIONING.

## COLLEGAMENTO AL SERBATOIO IDRAULICO/OIL TANK CONNECTION



COLLEGARE GLI INGRESSI OLIO (1) E (2) AL SERBATOIO DI OLIO IDRAULICO PRINCIPALE. UTILIZZARE TUBI CON  $\phi$ INT. MINIMO DI: 16 MM (1/2"). SE L'IMPIANTO NON PREVEDE GIÀ UN SERBATOIO PRINCIPALE PER ALTRI UTILIZZI, OCCORRE PREDISPORNE UNO IN METALLO, CHE CONTENGA ALMENO 12 LITRI DI OLIO IDRAULICO O DEL TIPO PER TRASMISSIONI AUTOMATICHE.

CONNECT OIL INLETS (1) AND (2) TO MAIN HYDRAULIC OIL TANK. USE PIPES WITH MIN. INTERNAL  $\phi$  OF 16 MM (1/2"). IF THE SYSTEM IS NOT EQUIPPED WITH A MAIN OIL TANK FOR OTHER USE, A METAL OIL TANK WITH A MIN. CAPACITY OF 12 LT. OF HYDRAULIC OIL OR OF OIL FOR AUTOMATIC TRANSMISSION IS TO BE ARRANGED.

## COLLEGAMENTO CON TUBO BY-PASS/ CONNECT WITH BY-PASS PIPE

Da utilizzare solo per impieghi saltuari (15 MINUTI IN UN ORA)  
Use only for short duration application (15 Minutes/hour).

INSERIRE PRIMA DELL'AVVIAMENTO, CIRCA 150 C.C. DI OLIO IDRAULICO, O PER TRASMISSIONI AUTOMATICHE.  
BEFORE STARTING, FILL WITH 150 C.C. OF HYDRAULIC OIL, OR FOR AUTOMATIC TRANSMISSION.

COLLEGARE GLI INGRESSI OLIO (1) E (2) TRAMITE IL TUBO BY-PASS (UTILIZZARE TUBO CON  $\phi$ INT. MINIMO DI 8MM).

CONNECT OIL INLETS (1) AND (2) WITH BY-PASS PIPE (USE PIPE WITH MIN. INTERNAL  $\phi$  8 OF MM).

